

5

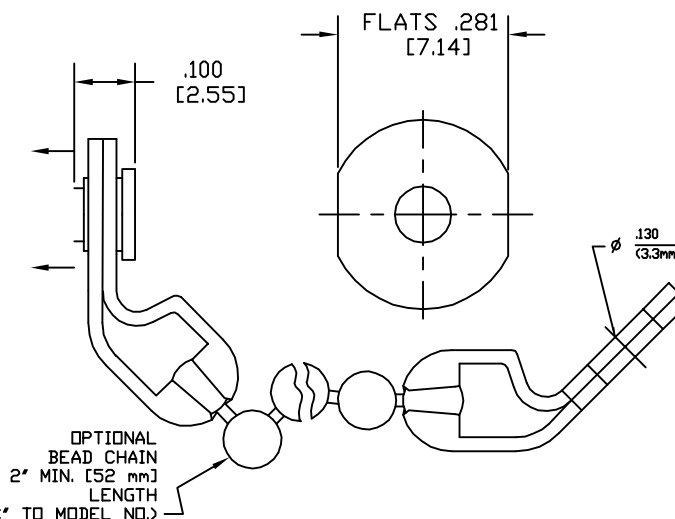
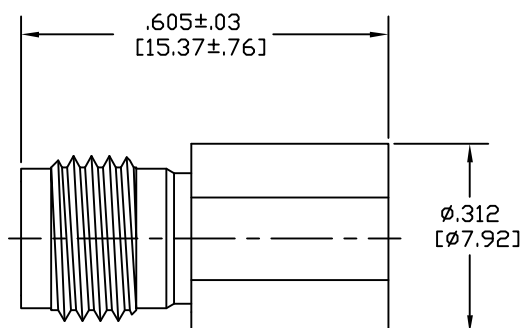
4

3

2

1

REVISIONS				
REV	DESCRIPTION	ECO #	DATE	APPROVED
B	ADDED STORAGE TEMP		3/29/10	T. KUHN
C	ADDED 2 W TO TABLE; FIXED TYPO ON 1W IN TABLE	12-034	11/2/12	T. KUHN



#### M07 NOTES:

##### 1. MATERIAL:

HOUSING: STAINLESS STEEL IAW ASTM-A484 & ASTM-A582, ALLOY 303,  
COND A

CONTACT: BERYLLIUM COPPER

DIELECTRIC - HIGH TEMPERATURE PLASTIC BEAD

##### 2. FINISH:

HOUSING - PASSIVATED STAINLESS STEEL

CONDUCTOR - GOLD PLATED IAW MIL-PRF-39012

##### 3. ELECTRICALS:

VSWR (MAX)	DC-18 GHz	1.15:1
	18-35 GHz	1.30:1
	35-50 GHz	1.45:1

POWER (AVG. MAX.) @25°C SEE TABLE

DERATES LINEARLY TO 10% @ +100°C

OPERATING/STORAGE TEMPERATURE RANGE °C-55 to +100

#### ORDERING INFORMATION

8502-710X-02	POWER LEVEL
X = 0	0.5 WATT
X = 1	1 WATT
X = 2	2 WATT

8502-710X-02 NO CHAIN  
8502-710X-02-C 2" CHAIN ADDED

DRAWING PRACTICES PER ANSI-Y-14.5 MIL-STD-100 & 1000	UNLESS OTHERWISE SPECIFIED TOLERANCES IN:
DIMENSIONS ARE IN INCHES AND APPLY BEFORE/AFTER PROCESSING	DECIMALS INCH DWG
SURFACE ROUGHNESS INCHES 63 ✓	.X" .03" [.76] .XX" .010" [.25] .XXX" .005 [.127] .XXXX" .0005" [.013]
FINISH: SEE NOTES	ANGLES ±0°30'
MATERIAL: SEE NOTES	REMOVE ALL BURRS/SHARP W/ BREAK / R OF .003" TO .0005" UNLESS OTHERWISE NOTED DIAS CONCENTRIC <.003 T.I.R.
NOTE: THIS DRAWING INCORPORATES THIRD ANGLE PROJECTION	DO NOT SCALE PRINT
INTERPRET IAW ANSI Y14.5-1982	

DRAWN T. KUHN	DATE 2/11/09
CHECKED	DATE
ENG APPR. T. KUHN	DATE 2/11/09
THESE DRAWINGS AND SPECIFICATIONS ARE THE PROPERTY OF XMA CORP. OR OMNI SPECTRA AND SHALL NOT BE REPRODUCED, COPIED NOR USED - IN WHOLE OR IN PART - AS A BASIS FOR THE MANUFACTURE OR SALE OF OTHER ITEMS WITHOUT THE EXPRESS WRITTEN PERMISSION OF XMA CORP.	

<b>XMA</b> Powered by: Omni Spectra® Phone: 603-222-2256 Fax: 603-222-2259 150 Dow Street, Manchester, NH 03101	
TITLE TERMINATION, 2.4mm, FEMALE, DC-50GHz	
SIZE B	CAGE CODE 3HT76
SCALE 5:1	DRAWING NUMBER 8502-710X-02 (OPT "C")
XXX	REV C
SHEET 1 OF 1	

TEMPLATE REV -