

DESCRIPTION

The TES10000-50 is a Laboratory-quality, RF SPDT Switch with 50dB isolation and only 3dB insertion loss at 10GHz. The switch is non-reflective at all ports

The TES10000-50 is the smallest USB microwave switch available and is also priced significantly below the current market offerings.

The TES10000-50 has a pulse modulator function selectable from a menu, the pulse width and period can be set from 250nS to 8.0S in 250nS increments. The units high switching speed is better than 6nS.

Applications include switching between two RF sources or loads and pulse modulation for amplifier testing.

The optional HUB allows the switch to remain in a given state even after the host PC is removed from the system.

The switch also contains 0.5GB of flash memory used for installation files, test data and other supporting documentation. Drivers, utilities and documentation are available on the switch itself.

CALIBRATION

Full results of factory test data are stored in each units flash memory and is available through the USB interface.



RF DESIGN SERVICES



TES10000-50

Rev I May 2014

BENEFITS

50/40dB Isolation @ 5/10GHz

USB interface

100MHz to 10GHz

FEATURES

Low Insertion Loss

Fast switching speed <6nS

Absorptive

PI dB CW +23dBm

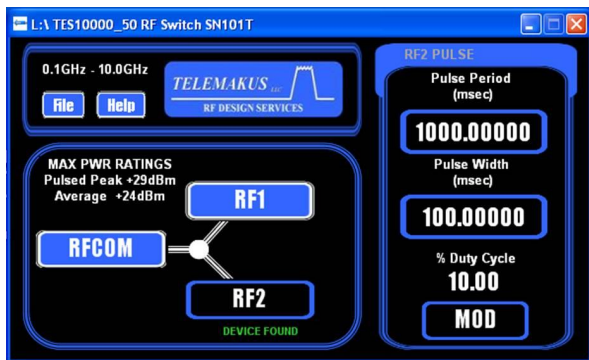
W7 and W8 supported



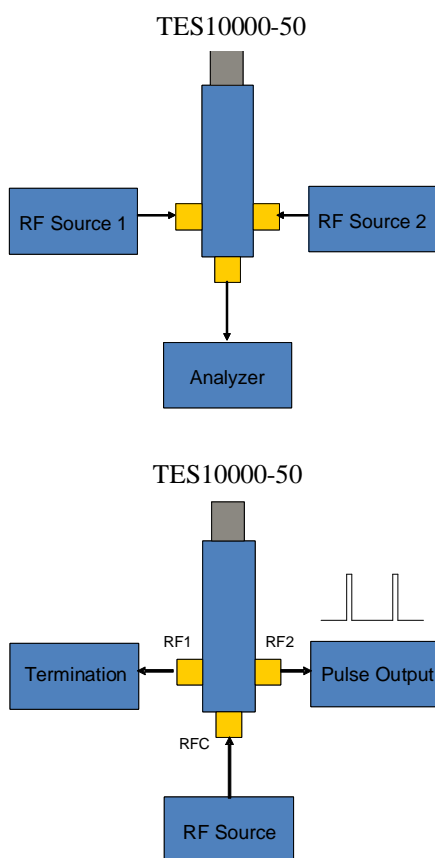
Actual Size

Phone: 916 458 6346
Fax: 916 983 8713
Email: mail@telemakus.com
www.telemakus.com

Primary Business Address
13405 Folsom Blvd #502
F O L S O M
C A , 9 5 6 3 0



Easy to use graphic interface with push button controls



Typical Configurations



RF DESIGN SERVICES

TES10000-50

Rev 1 May 2014

Ordering information

Model	Frequency	Max Input	Isolation
TES10000-50	100MHz to 10GHz	+23dBm	50dB
TES6000-30	100MHz to 6GHz	+33dBm	30dB
TES7000-50	100MHz to 7GHz	+24dBm	50dB
TES3000-60	100MHz to 3GHz	+23dBm	60dB

Specifications	
Parameter	Specification
Freq Range	100MHz to 10GHz
Isolation	>50dB @ 5GHz, >40dB @ 10GHz, >30dB @15GHz
Interface	USB 2.0
Current	150mA @5V Vbus(USB)
High IP3	+48dBm @ 10GHz
Insertion Loss	<3dB @ 10GHz, <4dB @15GHz
Balance RFC-RF1/RFC-RF2	<0.1dB at 10GHz
1dB Compression	23dBm
Max Switching Power	23dBm
Switching Time (10/90% RF)	<6nS
Return Loss	-15dB @ 10GHz
RF Common Connector	SMA Male
RF1 and RF2 Connector	SMA Female
USB Connector	Mini A

Environmental			
Temperature Range	-40 to +55 degC		
Not Environmentally sealed			

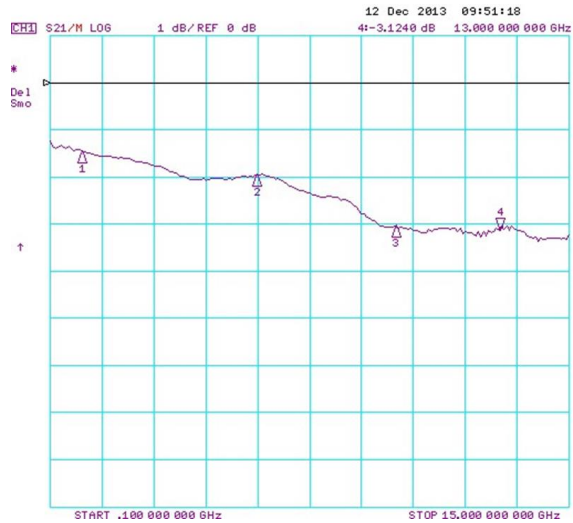
Phone: 916 458 6346
 Fax: 916 983 8713
 Email: mail@telemakus.com
 www.telemakus.com

Primary Business Address
 13405 Folsom Blvd #502
 Folsom
 CA,95630

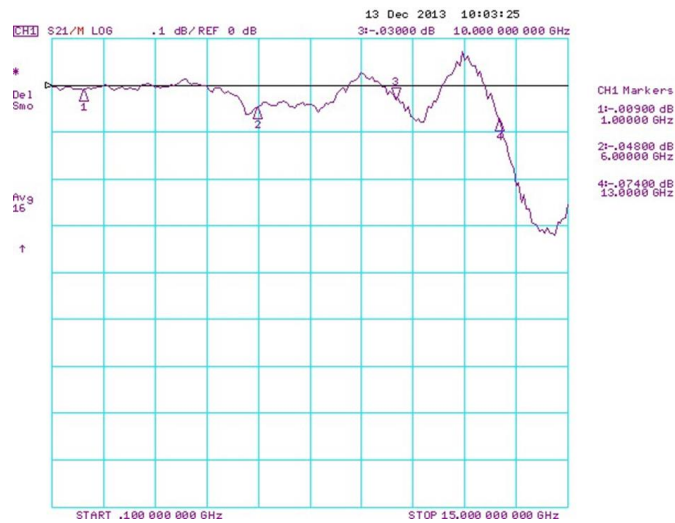
TES10000-50 Typical



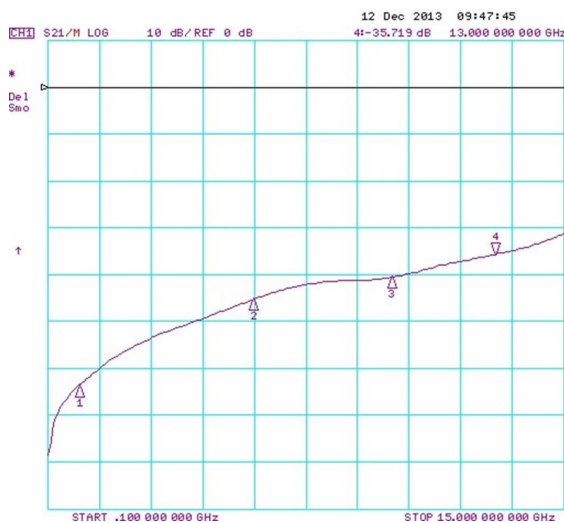
Insertion loss RFC-RF1



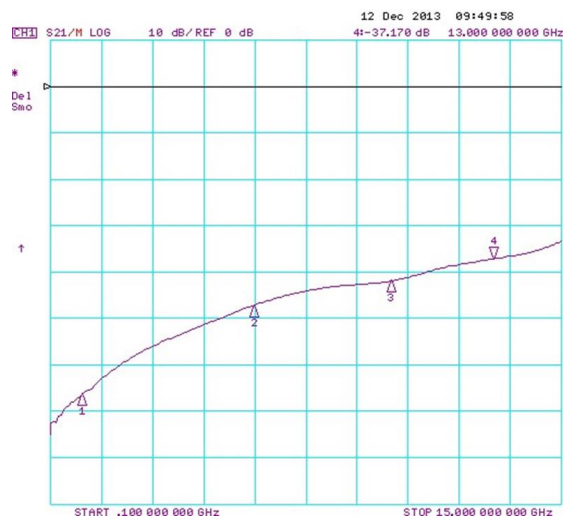
Insertion loss RFC-RF2



Amplitude Balance RFC/1-RFC/2 0.1dB/div



Isolation RFC-RF1



Isolation RFC-RF2