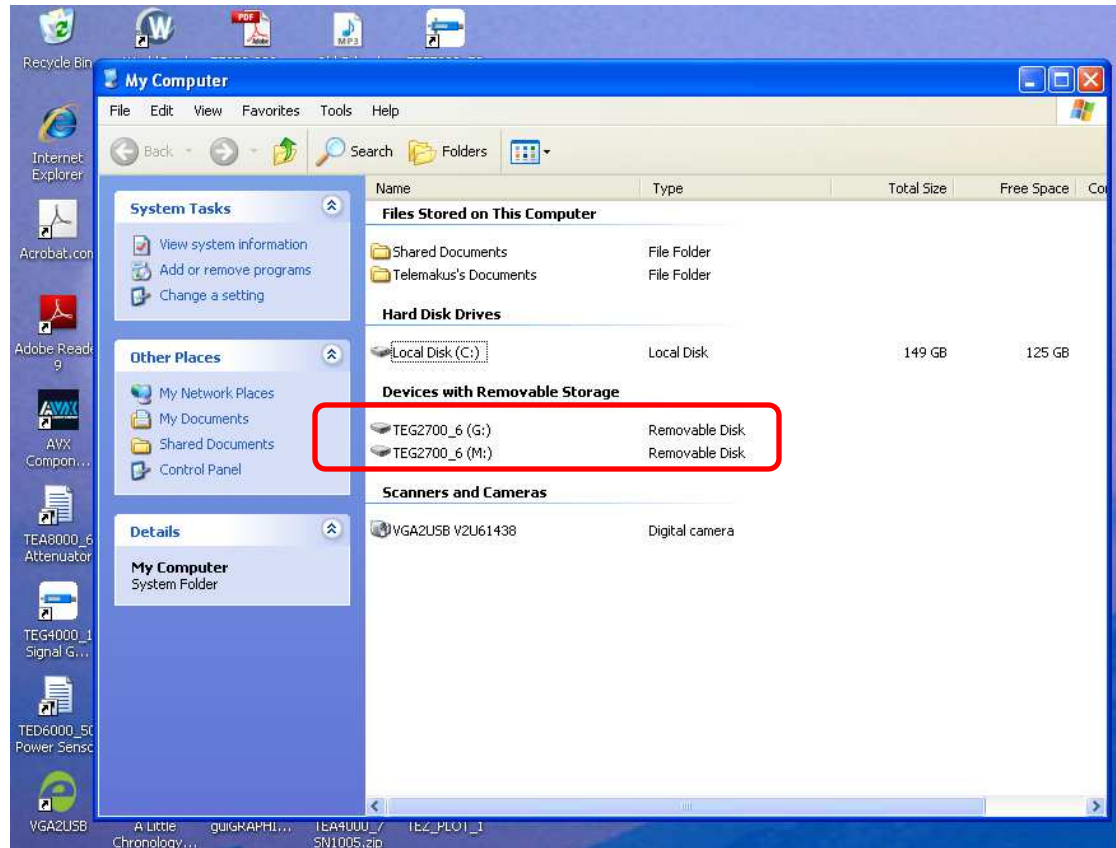


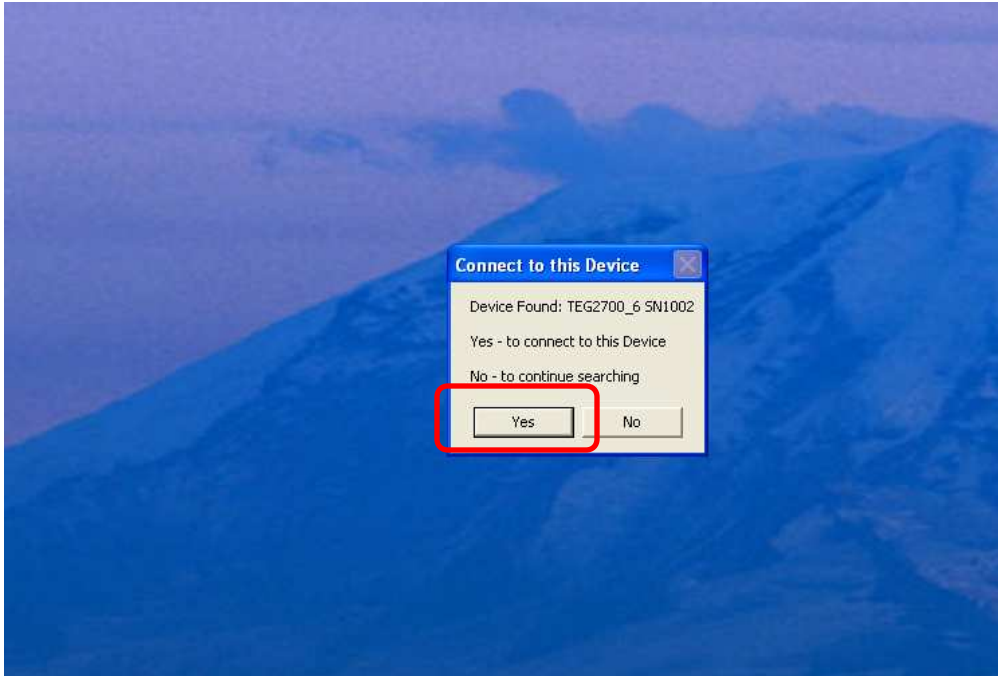
How to Control two or more devices from the same PC by using the GUI Software





Plug both devices into same machine

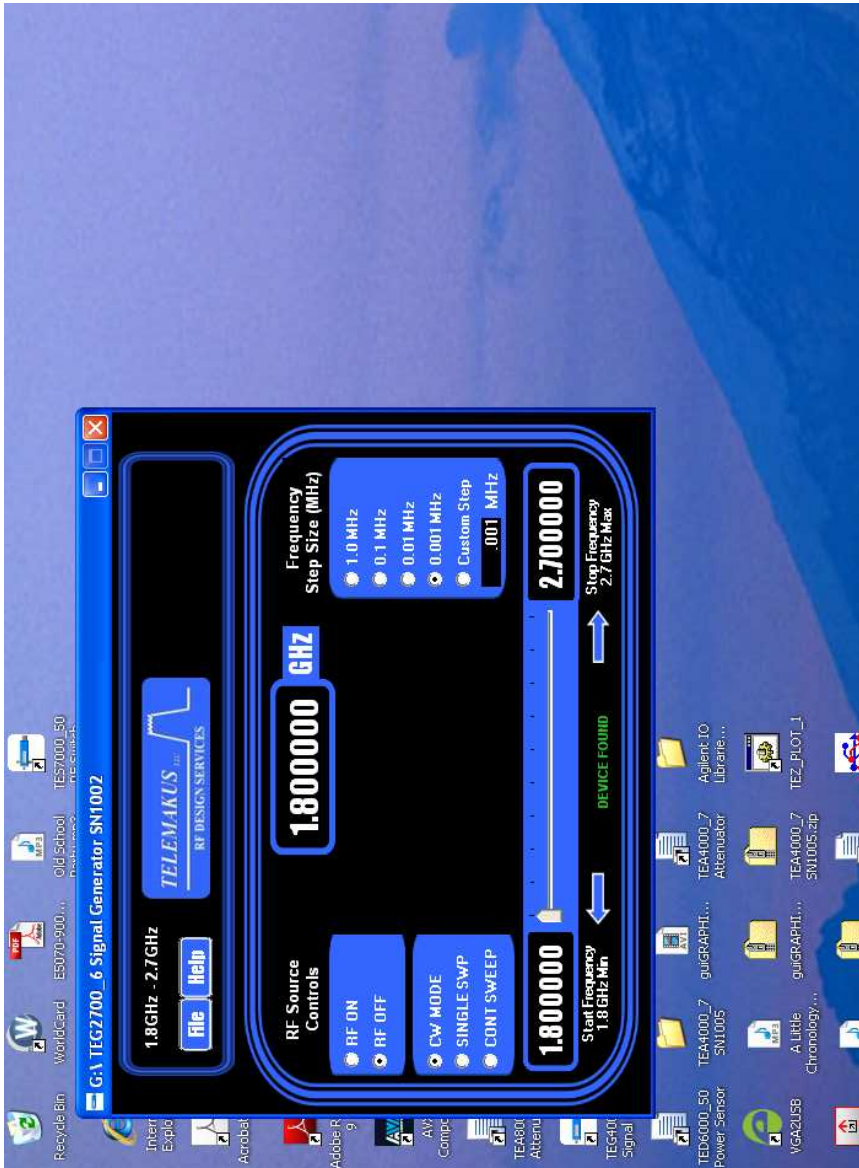
Both devices should be visible using My Computer



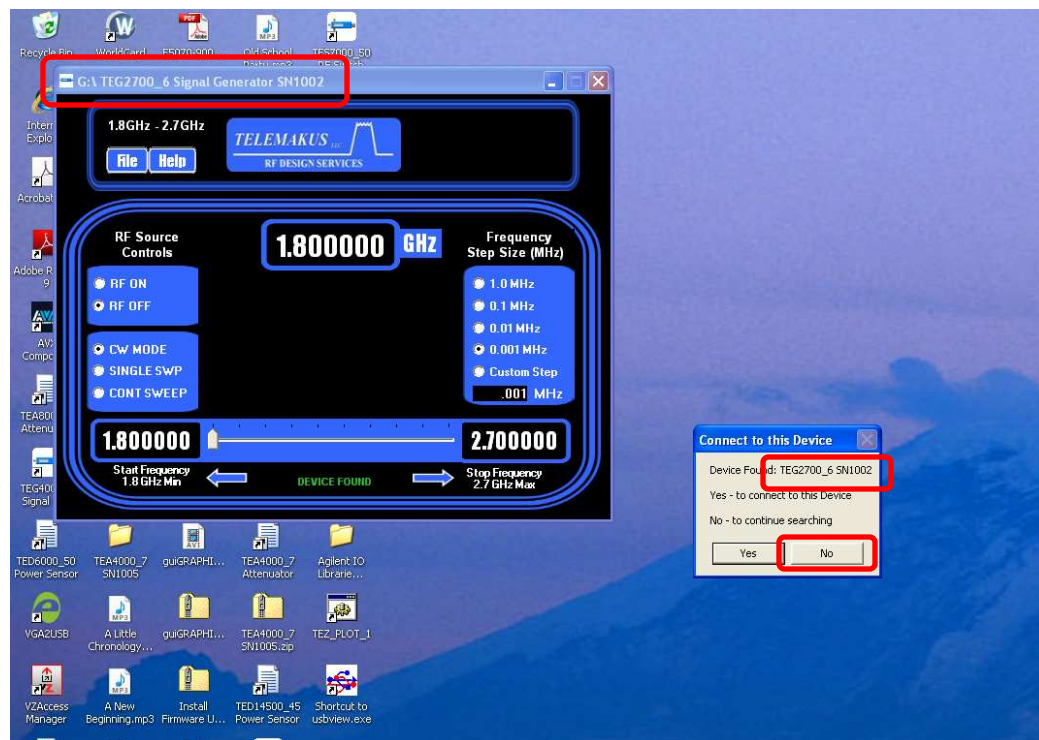
Launch a first copy of the GUI by using the shortcut on Desktop

The software will prompt to connect to the first device

Answer YES to connect to the first device



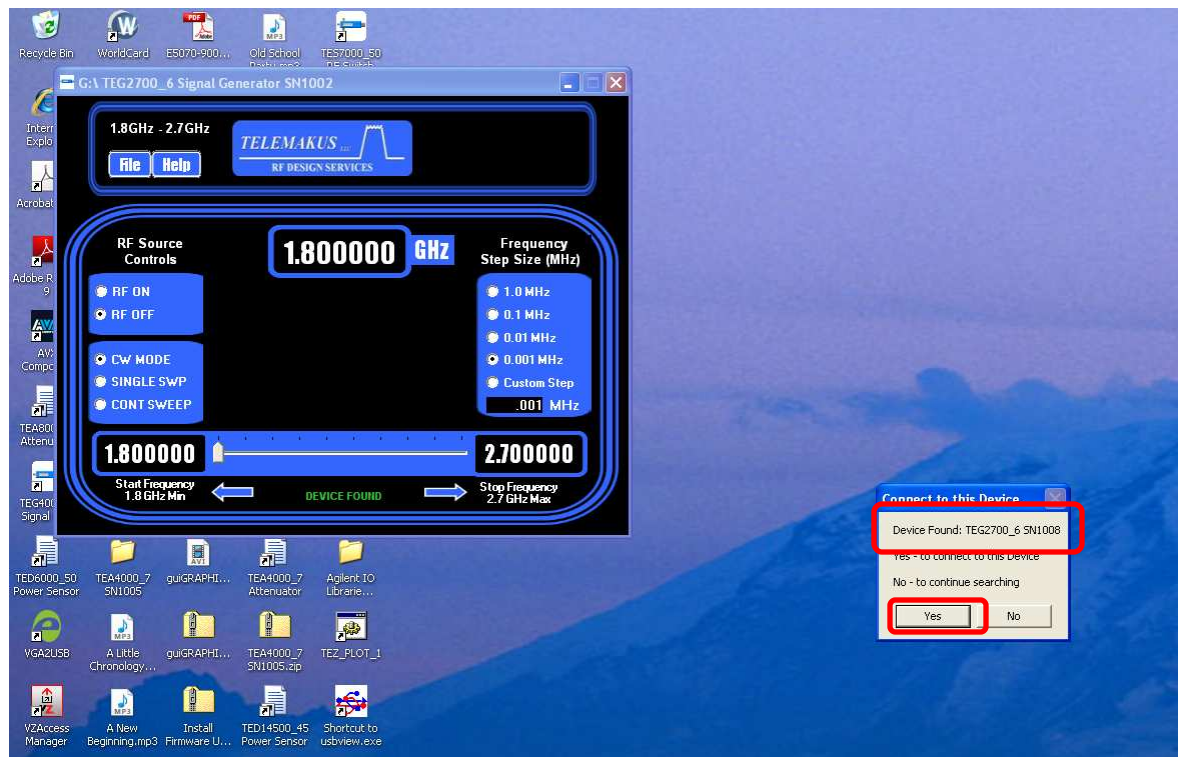
The first device will start up



Launch a the second copy of GUI by using same short cut

The software will find the first device that is now running.
The software will prompt to connect to this first device

Answer NO to continue searching for NEXT device



The software will find the second device

Answer YES to connect to the second device



The second device will start up

Each device will now have a GUI screen for controlling